

Two new *Stenus* species from the Sayan Mountains in Southern Siberia (Insecta: Coleoptera: Staphylinidae: Steninae)

With 7 Figures

ALEXANDER B. RYVKIN
Moscow

Abstract. Two new *Stenus* species from the W-Sayan (Kulumys Mt. Ridge) are described: *S. (Nestus) semiputatus* spec. nov. of the *cautus*-group, and *S. (Parastenus) clivus* spec. nov. of the *ludyi*-group.

Резюме. Описаны два новых вида рода *Stenus* LATREILLE, 1796 из Западного Саяна (хребет Кулумыс): *S. (Nestus) semiputatus* spec. nov. из группы *cautus* и *S. (Parastenus) clivus* spec. nov. из группы *ludyi*.

Through the kind assistance of Dr. V.G. SHILENKOV, Irkutsk, I was privileged to examine some material collected by him in Southern Siberia. Two new species of *Stenus* LATREILLE, 1796 found there, are described below. My best thanks are due to Dr. V.G. SHILENKOV for the loan of the material.

Stenus (Nestus) semiputatus spec. nov. (Figs. 1–3)

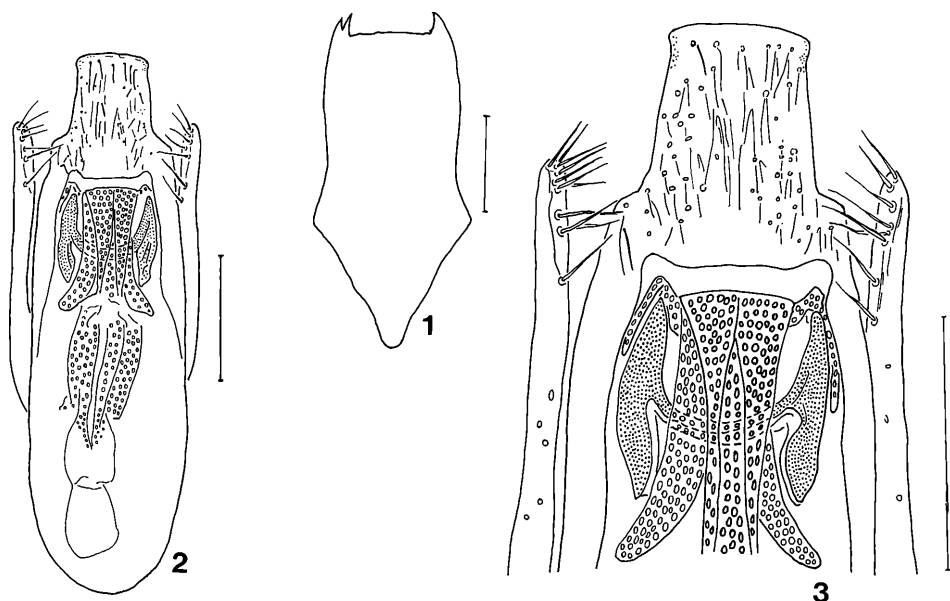
Description. Length 2.6–2.8 mm. Black, fairly shining, coarsely but not very densely punctate, with moderately long and moderately dense silver pubescence. Antennae black, with middle segments brownish-black; maxillary palpi black, with 1st segment yellow and base of 2nd brownish; legs black, tarsi somewhat lighter.

Head distinctly broader than pronotum (46:38), a bit narrower than elytra in their widest part (46:49) and much broader than those in humeri (46:38). Front with two lateral impressions and a median elevation in between; the median elevation much broader than the lateral portions. Punctuation fairly coarse and dense, but not rugose, denser in the lateral impressions; central part of median elevation with a longitudinal strip impunctate. Antennae short, length proportions of the antennal segments 2–8 as 5:6:5:4:4:3:3.

Pronotum without distinct impressions, as broad as long (38:38), broadest near middle, narrowed convexly to anterior margin and concavely to posterior margin. Punctuation somewhat larger than that of head, but much finer than that of elytra, fairly deep and dense, irregular, evidently larger and coarser near the posterior margin.

Elytra distinctly broader than long (49:40), much broader in posterior part than in humeri (49:38), nearly as long as pronotum (40:38), by suture a bit shorter than pronotum (35:38); lateral sides behind rounded humeri evidently divergent. Sutural and humeral impressions not deep, but developed. Punctures much greater, but somewhat sparser than at pronotum. Legs fairly short, metatarsus about two thirds as long as metatibia (27:40), 1st segment of metatarsus about as long as the 5th.

Abdomen moderately convex, almost parallel-sided, with paratergites small, but obvious. Fore visible tergites with four short longitudinal keels at their basal parts. Extremely fine membranous fringe of 5th



Figs. 1–3: *Stenus (Nestus) semiputatus* spec. nov. (holotype): 1st – 9th abdominal sternite; 2–3 – aedeagus: 2 – ventral view, 3 – apical part ventrally. (Scales: 0.1 mm).

visible tergite is distinct only on lateral parts of posterior margin. Punctuation fairly dense and deep at the fore visible tergites, sparser medially and medioposteriorly, very sparse and flat at 7th and 8th tergites.

Ground-sculpture well developed at the abdomen (especially at its posterior tergites) and very feeble at fore part of body.

Male. Meso- and metatibiae without any teeth. Abdominal sternite 5 slightly depressed medio-posteriorly; sternites 6–7 with a broad and deep medial impression flanked by distinct longitudinal keels, posterior margins of these sternites with a broad emargination; sternite 8 not impressed and not emarginated, convexly rounded; sternite 9 as in Fig. 1; aedeagus as in Figs. 2–3.

Female. Unknown.

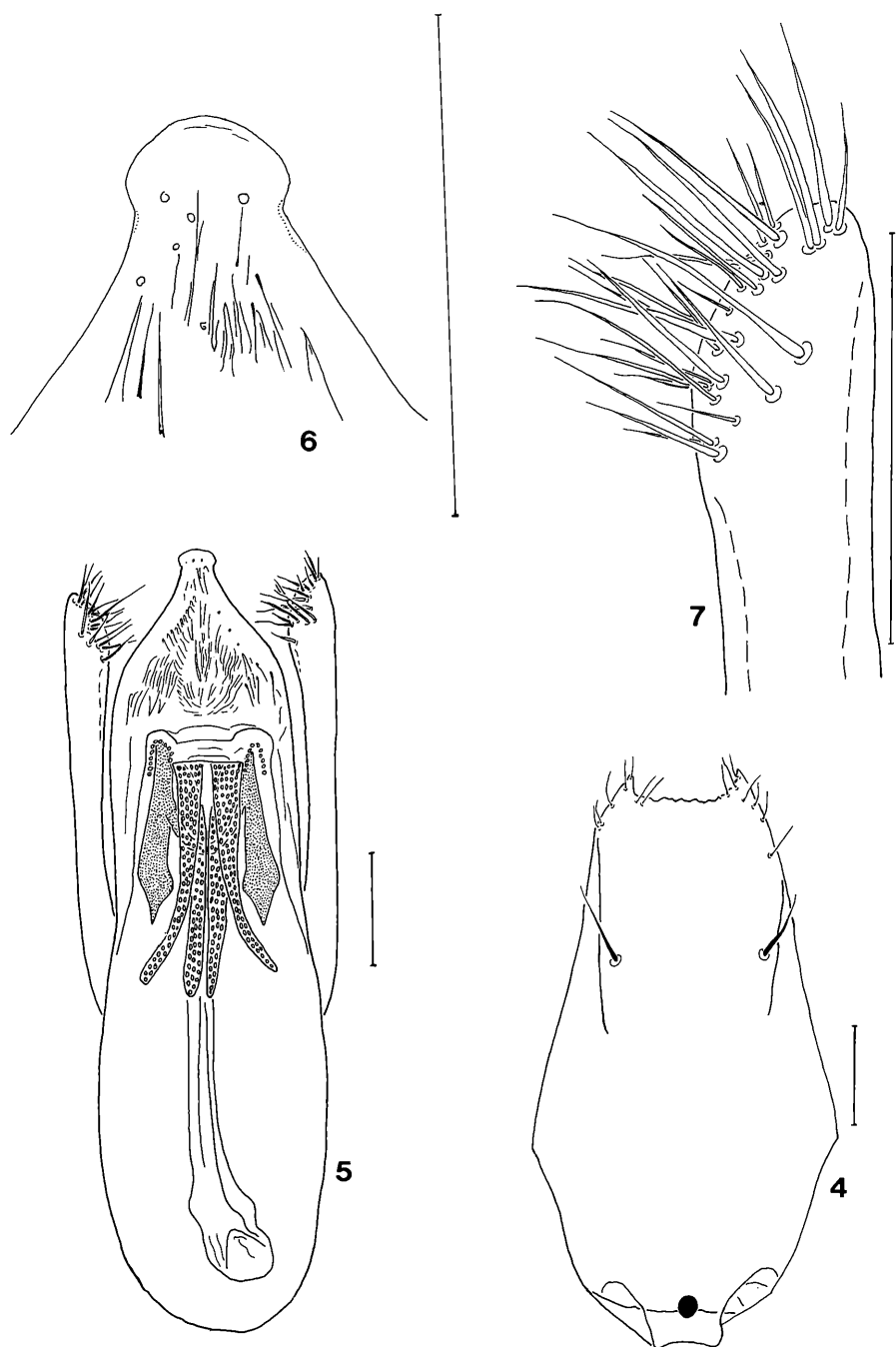
Material. Holotype, male, and paratypes (3 males): Russia, W-Sayan, Kulumys Mt. Ridge, near pass, 1800 m, near snow, 11.VII.1985, V Shilenkov leg.

Holotype has been housed in the Zoological Museum of the Moscow State University, 2 paratypes are in my personal collection, 1 paratype in the Staatliches Museum für Tierkunde Dresden.

Diagnosis. This wonderful new species belonging to the *cautus*-group can be distinguished from all the known representatives by the short elytra, greater pronotum without any furrows and impressions, character of punctuation, conspicuous shape of the aedeagus and structure of the male abdominal sternites 5–8.

***Stenus (Parastenus) clivus* spec. nov. (Figs. 4–7)**

Description. Length 4.1 mm. Black, fatty shining, densely punctate, moderately densely pubescent with short silver hairs. Antennae, palpi and legs brownish-yellow, femoral tip feebly darkened, brownish; labrum black, with anterior margin brown, sparsely pubescent; clypeus densely pubescent with long golden hairs.



Figs. 4–7: *Stenus* (*Parastenus*) *clivus* spec. nov. (holotype): 4th–9th abdominal sternite; 5 – aedeagus ventrally; 6 – apical part of median lobe; 7 – apical part of paramere. (Scales: 0.1 mm).

Head by $\frac{1}{5}$ th broader than pronotum (55:46), good as broad as elytra in their apical part (55:55), much broader than elytra in humeri (55:43). Front with a well-developed median elevation flanked by two longitudinal impressions; the median elevation posteriorly nearly as broad as each of the lateral portions. Punctuation fairly coarse and deep at lateral portions and in impressions; median elevation anteriorly with an elongated wide smooth spot with neither punctures nor ground-sculpture. Antennae moderately long, length proportions of segments 2–8 as 7 10:7:7:5:4:3.

Pronotum a bit broader than long (46:44), broadest at middle, narrowed convexly anteriorly and concavely posteriorly. Disk with a well-developed broad medial longitudinal impression; two feeble lateral impressions divergent anteriorly are evident on basal part; two small depressions flanking midline behind anterior margin. Punctuation a little larger than that of frontal lateral portions, coarse and dense, irregular, partly confluent, but not rugose, sparser in median impression.

Elytra broader than long (55:47), laterally a little longer than pronotum (47:44), but their suture much shorter than pronotum (38:44). Humeri poorly developed, rounded, lateral sides much divergent posteriorly. Sutural impression absent, but feeble humeral impressions are visible. Punctuation somewhat greater, a little sparser and more regular than that of pronotum, smaller and denser along suture.

Legs fairly long and slender. Metatarsus about as long as $\frac{3}{4}$ th of metatibia (36:47); 1st segment of metatarsus much longer than 5th; 4th tarsal segment obviously bilobed.

Abdomen moderately convex, slightly narrowed posteriorly, with paratergites distinct, but not very large. Posterior margin of the 5th visible tergite with a light membranous fringe. Punctuation of fore two visible tergites laterally about as coarse, but evidently sparser than that of frontal lateral portions, medially somewhat smaller and sparser than laterally. Punctuation of visible tergites 4–6 much shallower than that of preceeding terga, fairly irregular; posterior margin of visible tergite 6 medially with a patch impunctate twice as broad as average diameter of a puncture.

The whole body with very fine mesh-like or wavy ground sculpture invisible only at median elevation of the front.

Male. Meso- and metatibiae each with a short praeapical tooth internally. Posterior emargination of 8th abdominal sternite sinusoidal, broadly rounded, broader than deep; 9th sternite as in Fig. 4; aedeagus as in Figs. 5–7.

Female. Unknown.

Material. Holotype, male: Russia, W-Sayan, Kulumys Mt. Ridge, near pass, 1 800 m, near snow, 11. VII. 1985, V. SHILENKOV leg.

Holotype is in the collection of the Zoological Museum of the Moscow State University.

Diagnosis. *S. clivosus* spec. nov. is closely related to the *ludyi*-group, being distinguishable from all the known species of this group by the shape of the aedeagus. It differs from *S. ludyi* FAUVEL, 1886, widely distributed over Siberia, by the somewhat greater length, broader head, sculpture of the pronotum, character of punctuation, better developed ground sculpture of both pronotum and elytra.

References

- PUTHZ, V (1966): *Stenus cautus* ER., *europaeus* nov. spec. und *macrocephalus* AUBÉ (Coleoptera, Staphylinidae). 13. Beitrag zur Kenntnis der Steninen. – Ent. Blätter. **62**, Nr. 2: 111–120.

Address of the author:

A.B. Ryvkin, Tsentralnosibirskij (C.Siberian) Biosphere Reserve, Turukhanskij Rayon, Krasnoyarskij Kraj, 663196 Bor (Russia)

Leninskij Prospekt, 79/15, 117261 Moskva (Russia)

(Received on 5. IV. 1994)

ZOBODAT - www.zobodat.at

Zoologisch-Botanische Datenbank/Zoological-Botanical Database

Digitale Literatur/Digital Literature

Zeitschrift/Journal: [Reichenbachia](#)

Jahr/Year: 1995-1996

Band/Volume: [31](#)

Autor(en)/Author(s): Ryvkin Alexandr B.

Artikel/Article: [Two new Stenus species from the Sayan Mountains in Southern Siberia \(Insecta: Coleoptera: Staphylinidae: Steninae\) 41-44](#)