

**A new leaf spot disease of mango (*Mangifera indica* L.)
caused by *Curvularia lunata* (Wakker) Boedijn var. *aeria*
(Batista, Lima & Vasconcelos) M. B. Ellis**

By B. P. Singh

(Dept. of Plant Pathology, J. N. Agricultural Univ. Jabalpur 4, India)

(With 4 Figs.)

During a survey of fungi causing leaf spots, the author observed a serious disease of mango (*Mangifera indica* L.) in an orchard of village Badaur, district Allahabad. The causal organism was identi-

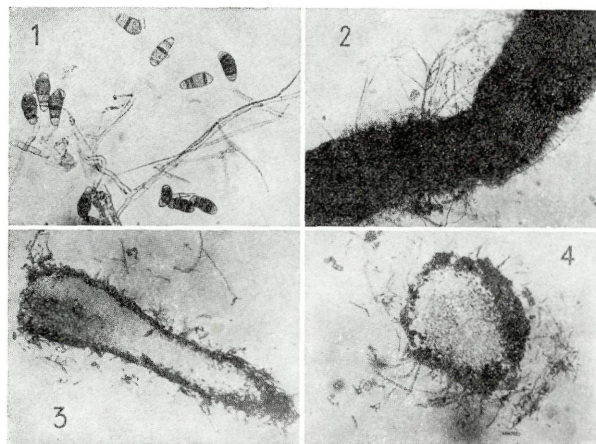


Fig. 1—4. *Curvularia lunata* (Wakker) Boedijn var. *aeria* (Batista, Lima & Vasconcelos) M. B. Ellis. Microphotographs: Fig. 1. Conidia. — Fig. 2. Synnemata. — Fig. 3. L. S. of the synnemata, and Fig. 4. T. S. of the synnemata.

fied as *Curvularia lunata* (Wakker) Boedijn var. *aeria* (Batista, Lima & Vasconcelos) M. B. Ellis. So far the fungus has not been reported on mango leaves from any part of the world and thus it is a new record.

The disease started in the form of small light brown spots at the tips of the leaves. Subsequently the symptoms advanced towards the

petiole covering almost the entire leaf surface and changing the colour into dark brown. Artificial inoculations were also made and they were successful.

The fungus grew and sporulated well on solid *Asthana* and Hawker's medium 'A'*). The cultural growth of the fungus was very peculiar due to production of very much elongated synnemata (Fig. 2). The wall of the synnemata were pseudoparenchymatous (Figs. 3 & 4). The hyphae were septate hyaline, branched and measured $2.5-3.8 \mu$ in width. Conidiophores were unbranched, erect, 3.8μ wide, olive brown to dirty brown in colour. Conidia measured $12.5-32.5 \mu \times 5.0-12.5 \mu$ and were clavate, straight, more or less fusiform, slightly bent or curved, 2-3 septate (Fig. 1) and olive brown to dirty brown in colour. They were borne in whorls at the new growing tips of the conidiophores.

The author is deeply indebted to Prof. R. N. Tandon for his valuable help. He is also thankful to Dr. G. C. Ainsworth, formerly director, C. M. I. Kew and to his colleagues for the final identification and confirmation of the culture, to the Head of the Botany Department, Allahabad University for providing laboratory facilities and to the Ministry of Education, Government of India for the award of S. R. T. scholarship.

*) *Asthana* and Hawker's medium 'A': glucose 5 g., KNO_3 3.5 g., KH_2PO_4 1.75 g., $\text{Mg SO}_4 \cdot 7\text{H}_2\text{O}$ 0.75 g., agar-agar 20 g., and distilled water 1,000 ml.

ZOBODAT - www.zobodat.at

Zoologisch-Botanische Datenbank/Zoological-Botanical Database

Digitale Literatur/Digital Literature

Zeitschrift/Journal: [Sydowia](#)

Jahr/Year: 1970/1971

Band/Volume: [24](#)

Autor(en)/Author(s): Singh B. P.

Artikel/Article: [A new leaf spot disease of mango \(*Mangifera indica* L.\) caused by *Curvularia lunata* \(Wakker\) Boedijn var. *aeria* \(Batista, Lima & Vasconcelos\) M. B. Ellis. 191-192](#)