

***Pedinus (Colpotus) skalei* n. sp. (Insecta: Coleoptera: Tenebrionidae: Pedinini)  
from southern Turkey**

ROLAND GRIMM

**Abstract**

*Pedinus (Colpotus) skalei* n. sp. is described from southern Turkey. The species is similar to *P. (C.) reitteri* Zürcher, 1911 from Cyprus, and is distinguished from that species by the shape of the aedeagus and the structure of the propleura.

**Zusammenfassung**

*Pedinus (Colpotus) skalei* n. sp. aus der Südtürkei wird beschrieben. Die Art ist *P. (C.) reitteri* Zürcher, 1911 von Zypern ähnlich und unterscheidet sich von dieser Art durch die Form des Aedoeagus und die Struktur der Propleuren.

**Key words:** Insecta, Coleoptera, Tenebrionidae, Pedinini, *Pedinus (Colpotus)*, new species, Turkey

**Introduction**

The species of the genus *Colpotus* Mulsant & Rey 1853 from the eastern Mediterranean region were treated by GRIMM & SCHAWALLER (2006), with discussion of the species characters and an identification key. In the revision of the subtribe Pedinina (KAMINSKI & IWAN 2017) *Colpotus* was downgraded to subgenus of the genus *Pedinus* Latreille, 1796. André Skale (Hof/Saale, Germany) collected a new species in southern Turkey which is described in the present paper.

Acronyms of depositories:

CRG – Collection Dr. Roland Grimm, Neuenbürg, Germany

NME – Naturkundemuseum Erfurt, Germany.

**Description**

*Pedinus (Colpotus) skalei* n. sp. Figs 1a, 1b

**Holotype** ♂: Turcia mer., Prov. Antalya, 15–25 km N Mahmutlar, 900–1500 m, 36°32'N/32°21'E, riverside, 4.VI.2004 (NME).

**Paratypes:** Same data as holotype, 1 ♂, 1 ♀ (CRG). – Turcia mer., Prov. Antalya, 13 km N Mahmutlar, Pass 1700 m, 36°31'43"N/32°14'09"E, 31.V.2004, leg. A. Skale, 1 ♂ (NME). – Turcia mer., Prov. Antalya, 13 km N Mahmutlar, Pass 1300 m, 36°31'43"N/32°14'09"E, 26.+29.V.2006, leg. A. Skale, 1 ♂ (NME). – Turcia mer., Prov. Antalya, 15 km N Mahmutlar, 900 m, 36°31'49"N/32°15'38"E, 31.V.2004, leg. A. Skale, 1 ♀ (NME).

**Etymology:** Named in honour of André Skale (Hof/Saale, Germany), the collector of the type specimens.

**Diagnosis:** In body size and shape, *Pedinus (Colpotus) skalei* n. sp. (Fig. 1) is similar to the Cyprian *P. (C.) reitteri*, but the shape of aedeagus is different (Figs 1b, 2), with the basal part of the distolateral tooth of the parameres narrower and without a ventral tubercle in *P. (C.) reitteri*. The propleura of that species have separated punctures and only a few weak longitudinal wrinkles near the procoxae.

**Description:** Body shape, see Fig. 1a, length 6.1–7.2 mm, width 2.2–2.6 mm; black, tarsi paler, blackish brown; sometimes parts of antennae also paler, brownish (probably teneral specimens).

Head densely, but separately punctured; frontoclypeal impression weak. Eyes completely divided by genal canthus, eye furrow deep. Antenna without peculiarities.

Pronotum slightly transverse, width/length ratio 1.18–1.23, widest before middle; apex arched emarginated, base bisinuate, lateral margins slightly arcuate; anterior angles protruding, acute but rounded; posterior angles subrectangular, rounded; all margins bordered, except middle of anterior margin; punctured as on head. Propleura with coarse punctures and longitudinal wrinkles.

Elytra oblong, subparallel sided, with rows of big, deeply incised punctures; 3<sup>rd</sup> row with 35–40 punctures; intervals as broad as punctural rows or somewhat narrower, flat to slightly convex, with densely fine punctuation. Ventrites rugose and coarsely punctured.

Legs. Male pro- and metafemur ventrally on outer edge with row of short setae. Male protibia apically markedly

widened on inner side; mesotibia in apical half also widened on inner side, apically twice as wide as basally; basal three protarsomeres in males markedly, mesotarsomeres only weakly dilated.

Aedeagus see Fig 1b; basal part of distolateral tooth wide, ventrally with tubercle.

### Acknowledgements

I thank Dipl.-Biol. Matthias Hartmann (Erfurt) for providing the material studied. I am also grateful to Johannes Reibnitz (Stuttgart) for producing the photographs and arranging the plate. Dr. Wolfgang Schawaller improved the manuscript with his comments and corrections.

### References

GRIMM, R. & W. SCHAWALLER (2000): The genus *Colpotus* Mulsant & Rey (Coleoptera: Tenebrionidae) in the Eastern Mediterranean Region, with descriptions of two new species. – *Stuttgarter Beiträge zur Naturkunde, Ser. A*, **615**: 1–15.  
KAMINSKI, M. J. & D. IWAN (2017): Revision of the subtribe Pedinina (Tenebrionidae: Pedinini). – *Annales Zoologici* **67**: 585–607.

### Author's address:

Dr. Roland Grimm  
Unterer Sägerweg 74  
75305 Neuenbürg  
Germany  
grimm.tenebrio@t-online.de

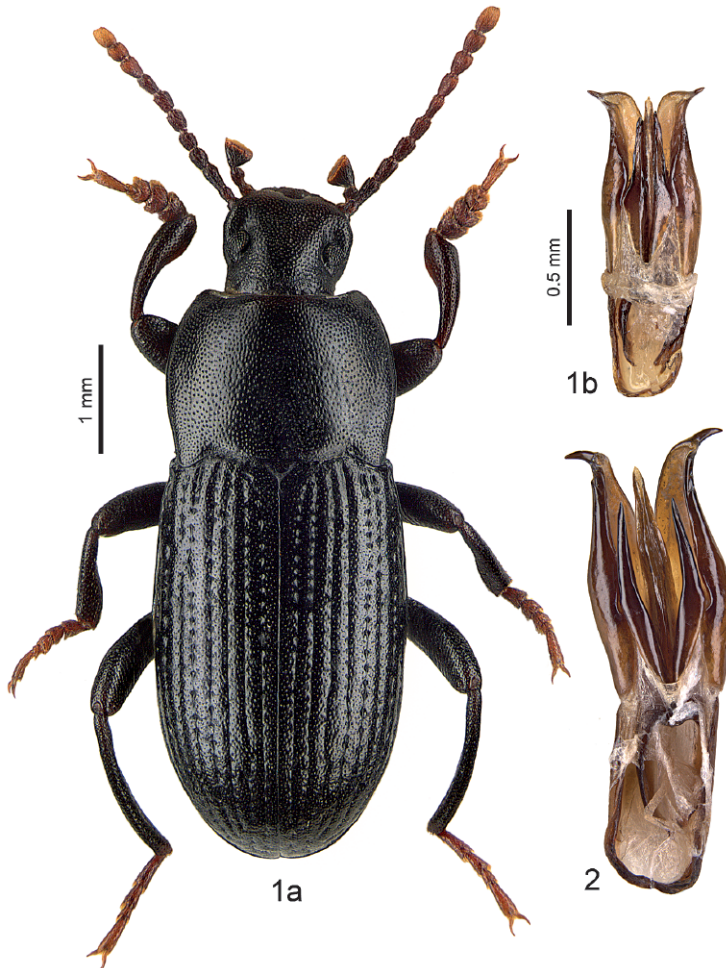


Fig 1–2. *Pedinus (Colpotus)* species, dorsal view (1a), aedeagi ventral (1b, 2). – 1a, 1b. *P. (C.) skalei* n. sp. 2. *P. (C.) reitteri* Zürcher.

# ZOBODAT - [www.zobodat.at](http://www.zobodat.at)

Zoologisch-Botanische Datenbank/Zoological-Botanical Database

Digitale Literatur/Digital Literature

Zeitschrift/Journal: [Veröffentlichungen des Naturkundemuseums Erfurt \(in Folge VERNATE\)](#)

Jahr/Year: 2018

Band/Volume: [37](#)

Autor(en)/Author(s): Grimm Roland

Artikel/Article: [Pedinus \(Colpotus\) skalei n. sp. \(Insecta: Coleoptera: Tenebrionidae: Pedinini\) from southern Turkey 307-308](#)