

New data on the Oriental Xantholinini. 48. New species and new records from Nepal in the Naturkundemuseum Erfurt (Insecta: Coleoptera: Staphylinidae)

ARNALDO BORDONI¹

Abstract

Some specimens of Xantholinini (Coleoptera, Staphylinidae) of the Naturkundemuseum Erfurt, collected in Nepal, are studied. *Medhiamia hartmanni* sp. n. from the Taplejung area is described and illustrated. Some new records are listed.

Riassunto

Sono studiati numerosi esemplari raccolti in Nepal e conservati nel Naturkundemuseum di Erfurt. Viene descritta ed illustrata *Medhiamia hartmanni* sp. n. della regione di Taplejung e sono forniti nuovi dati geonemici di altre sette specie.

Key words: Coleoptera, Staphylinidae, *Medhiamia*, new species, new records, Himalaya, Nepal

Introduction

In the Xantholinini sent to me in studio by Matthias Hartmann, Director of the Naturkundemuseum Erfurt, I found some specimens collected in Nepal. After the revision of the Oriental Xantholinini (BORDONI 2002), I have studied few specimens from this region (BORDONI 2006, 2009, 2017), for which the examination of further specimens is of particular interest, adding to the knowledge of the distribution in the region of the tribe in question.

Material and methods

Some specimens collected in Nepal by colleagues of the Naturkundemuseum Erfurt are studied and illustrated. The material used for this study is deposited in the following institution and private collection (abbreviations are used to refer to collections in the text): cB: coll. A. Bordoni, Florence, Italy; NME – Naturkunde-

museum Erfurt, Germany. For the study of specimens I used a Wild M5A binocular and an Optika B-290 triocular microscope.

Taxonomy (in systematic order)

Thyrecephalus jocheni Bordoni, 2002

Examined material. India, Uttaranchal, 9 km E Pithoragarh, 1260 m, 29°33'43"N, 80°18'53"E, A. Weigel 27.V.2005, 1 ex. (NME).

Distribution. Nepal, Sikkim, Meghalaya, Assam, W Bengal (BORDONI 2002).

Achmonia eppelsheimi (Bernhauer & Schubert, 1914)

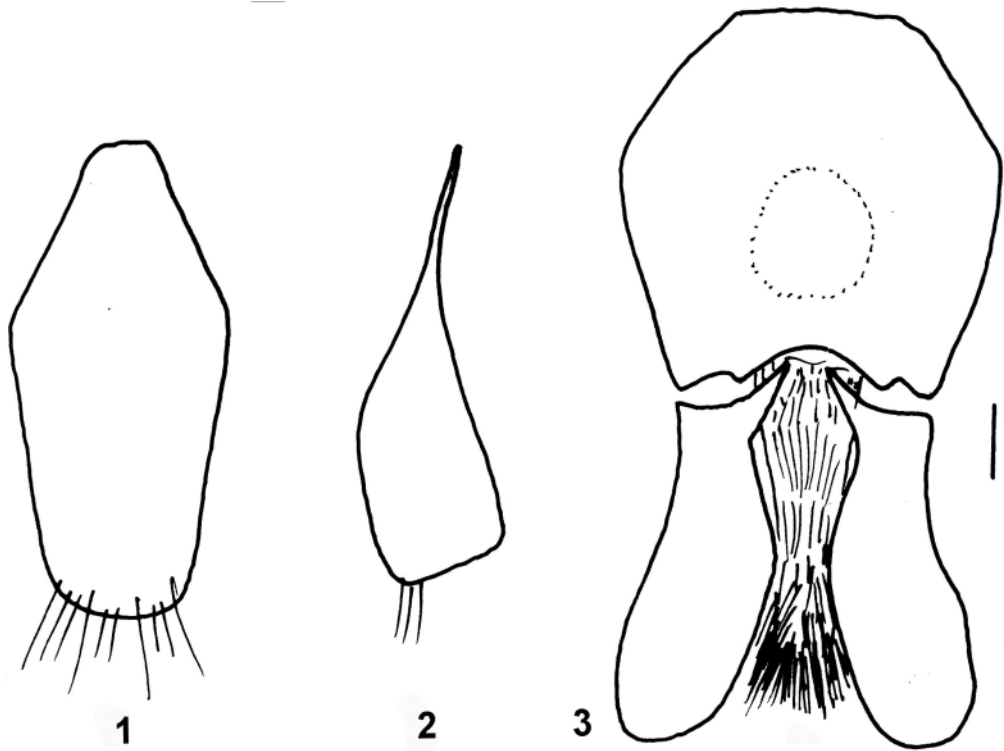
Examined material. Nepal, Bajang way 17 km NE Chainpur, 29°39'30"N, 81°19'14"E, to Dagaira Khola S Dhalaun (29°40'54"N, 81°20'44"E), 1000–1850 m, A. Weigel 17.IV.2009, 1 ex. (NME); Bajang way from Silkabada (29°26'48"N, 81°09'14"E), to Khaptad N. P. entry (29°24'23"N, 81°08'31"E), 1600–3050 m, A. Weigel 1.VII.2009, 1 ex. (NME), 1 ex. (cB); SW Dhaulagari Himal Dhara Khola Val., 28°30'36"N, 83°18'16"E., 1900 m, J. Schmidt 21–22.V.2012. 1 ex: (NME); Mahakali-Darchula Godhani to Jatra to forest SW Thaisain, 1920–2210 m, 29°49'52"N, 80°40'45"E to 29°51'52"N, 80°40'17"E, A. Weigel 18.VI.2017, 1 ex. (cB).

Distribution. N India, Nepal, Sikkim, Bhutan (BORDONI 2002).

Medhiamia hartmanni sp. n. (Figs 1–3)

Examined Material. **Holotype** ♂: Nepal, Mechi/Taplejung, 32 km NE Taplejung, Anda Pheci-Tortong, 3190 m, 27°32'11"N, 87°55'09"E, rhododendron forest, A. Weigel 18.V.2003 (NME).

¹ 308^o contribution to the knowledge of the Staphylinidae



Figs 1–3. *Medhiana hartmanni* sp. n.: tergite (1) and sternite (2) of the male genital segment, aedeagus (3) (scale bar: 0.1 mm).

Description. Length of body 6.7 mm from anterior margin of head to posterior margin of elytra: 3.7 mm. Body black, moderately reddish. Antennae and legs brown dark. Head ovoid narrow, slightly narrower forward, with sub-retilinear sides and rounded posterior angles. Eyes very small and barely protruding. Surface of head with polygonal micro-reticulation and superficial areolate punctation, more evident and sparse on the sides of a very narrow median stripe, where the micro-reticulation is absent. Pronotum narrow, slender, with sub-rectilinear and sub-parallel sides, as long as head and narrower than it, narrow forward where the anterior margins are very oblique, with almost obsolete anterior angles; posterior portion of pronotum not narrow. Surface with more or less transverse micro-striation, dorsal series of 12–13 superficial and irregular punctures and lateral series of 6–7 irregular punctures. Elytra moderately longer than pronotum, wider than it, dilated posteriad, with rounded humeral angles. Surface wrinkled, with traces of polygonal micro-reticulation and indistinct, sparse punctation.

Abdomen with transverse micro-striation and polygonal micro-reticulation at the base of the segment and with very fine and very sparse punctation on the sides.

Tergite and sternite of the male genital segment as in Figs 1–2. Aedeagus (Fig. 3) 0.96 mm long, with not spherical but squarish basal bulb and very large, symmetrical parameres; inner sac everted, covered with very fine and dense spinulae.

Etymology. The species is gladly dedicated to Matthias Hartmann, Director of the Naturkundemuseum Erfurt.

Distribution. The species is known only from the type locality.

Remarks. This species is related to *M. xiaolongmanensis* Zhou & Zhou, 2012 from Beijing and Sichuan for the general structure of the aedeagus, but differs by external characters and inner sac of the aedeagus.

Some *Medhiana* Bordon, 2002 occurs in Nepal: *M. pauper* (Sharp, 1888), also known from Himachal Pradesh (India), Shaanxi (China), Japan; *M. schawalleri* Bordon, 2002 from Myagdi Khola and *M. nepalica*

Bordoni, 2017 from Lukla (BORDONI 2002, 2017). The new species differs from these taxa by size, micro-sculpture, punctation and aedeagus.

***Nepalinus piceus* (Cameron, 1916)**

Examined Material. Nepal, Dolpo, Ruhagat Khola Vall., E of Juphal, 2500 m, 28.58N, 82.51E, J. Schmidt 4–6.IX.2012, 1 ex. (NME).

Distribution. N India, Nepal (BORDONI 2002).

***Nepalinus rubiginosus* Bordoni, 2002**

Examined Material. E Nepal, Sankhuwasabha, N Chauki, 2600–2700 m, 27°12'32"N, 87°27'47"E, J. Schmidt 27.V.2016, 22 exx. (NME), 6 exx. (cB); Terathum Distr., S Ghusa, 2900–3000 m, 27°16'23"N, 87°29'47"E, J. Schmidt 26.V.2016, 6 exx. (NME), 2 exx. (cB); Taplejung, W slope Pathibara, 2600–2800 m, 27°24'24"N, 87°45'06"E, J. Schmidt 18.–19.V.2016, 1 ex. (NME); E Taplejung, S slope, Tamur Valley, 1800–2150 m, 27.24N, 87.44E, J. Schmidt 20.–21.V.2016, 1 ex. (NME).

Distribution. Nepal (BORDONI 2002). First record since the description of the species. Endemic to Nepal.

Remarks. All the specimens are females.

***Atopolinus subnigroaeneus* (Coiffait, 1982)**

Examined material. Nepal, Arun Valley, env. Tashigaron, 2200–2400 m, 27 37N, 87 14E, Schmidt 12 + 28.–29.V.2014, 4 exx. (NME), 1 ex. (cB).

Distribution. Nepal, W Bengal (BORDONI 2002).

***Atopolinus asymmetricus* (Coiffait, 1976)**

Examined material. Nepal, SW Dhaulagari, Himal Dhara, Khola Vall., 28°30'36"N, 83°18'16"E, 1900 m, J. Schmidt 21.–22.V.2012, 7 exx. (NME), 2 exx. (cB); same data, S Slope, N Banduk vill., 1900–2300 m, 28°27'22"N, 83°35'13"E to 28°28'07"N, 83°35'10"E, J. Schmidt 6.V.2009, 2 exx. (NME).

Distribution. Nepal (BORDONI 2002). Endemic to Nepal.

***Atopolinus nepalensis* Bordoni, 2002**

Examined Material. E Nepal, Sankhuwasabha, N Chauki, 2600–2700 m, 27°12'32"N, 87°27'47"E, J. Schmi-

dt 27.V.2016, 22 exx. (NME); Taplejung, W slope Pathibara, 2600–2800 m, 27°24'24"N, 87°45'06"E, J. Schmidt 18.–19.V.2016, 4 exx. (NME); Sankhuwasabha, N Chause, 2600–2700 m, 27°12'52"N, 87°2'47"E, J. Schmidt 27.V.2016, 1 ex. (NME), 2 exx. (cB); Taplejung, Gurja to Gupta, 2700–2850 m, 27°17'45"N, 87°32'05"E, J. Schmidt 25.V.2016, 1 ex. (NME), 2 exx. (cB); W Gurja, 2100–2500 m, 27.19N, 87.33E, J. Schmidt 23.–24.V.2016, 1 ex. (NME).

Distribution. Nepal (BORDONI 2002). First records since the description of the species. Endemic to Nepal.

Acknowledgements

I thank Matthias Hartmann, Director of the Naturkundemuseum Erfurt who sent me this interesting material.

References

- BORDONI, A. (2002): Xantholinini della Regione Orientale (Coleoptera: Staphylinidae). Classificazione, filogenesi e revisione tassonomica. – Memorie del Museo regionale di Scienze naturali Torino **33**: 998 pp.
- (2006): New data on the Xantholinini (Coleoptera: Staphylinidae) of the Orientl Region. X. A new speies of *Atopolinus* from Nepal and additional records. – Suttgarter Beiträge zur Naturkunde, ser. A **690**: 1–6.
 - (2009): New data on the Xantholinini of the Orientl Region. 18. Specimens from Nepal of the Naturkundemuseum Erfurt (Insecta: Coleoptera: Staphylinidae). – In: HARTMANN, M. & J. WEIPERT (eds.): Biodiversität und Naturlausstattung im Himalaya **III**: 243–247.
 - (2017): New data on the Oriental Xantholinini. 44. New species and new records from Nepal, Malaysia, Vietnam, Philippines, Sumatra, and Sabah (Coleoptera Staphylinidae). – Contributions to Entomology **67**, 2: 255–264.
- ZHOU, Y. & H. ZHOU (2012): Taxonomy of the genus *Medhiama* Bordoni, 2002 (Coleoptera: Staphylinidae, Staphylininae, Xantholinini) with descriptions of three new species. – Zootaxa **3478**: 169–191.

Author's address:

Museo di Storia Naturale dell'Università degli Studi di Firenze, sezione di Zoologia „La Specola“, via Romana 17
I–50125 Firenze
Italy
E mail: arnaldo.bordoni@fastwebnet.it

ZOBODAT - www.zobodat.at

Zoologisch-Botanische Datenbank/Zoological-Botanical Database

Digitale Literatur/Digital Literature

Zeitschrift/Journal: [Veröffentlichungen des Naturkundemuseums Erfurt \(in Folge VERNATE\)](#)

Jahr/Year: 2019

Band/Volume: [38](#)

Autor(en)/Author(s): Bordoni Arnaldo

Artikel/Article: [New data on the Oriental Xantholinini. 48. New species and new records from Nepal in the Naturkundemuseum Erfurt \(Insecta: Coleoptera: Staphylinidae\) 181-183](#)