

A new tiger beetle species (Coleoptera: Cicindelidae) from Palawan Island, Philippines

Jürgen WIESNER

Abstract

Cylindera (Ifasina) kerkeringi sp.n. is described from Palawan Island. It can be distinguished from the other species of the subgenus *Ifasina* by the colour pattern of the elytra, the shape of the elytral apex, and the shape of the aedeagus.

Key words. *Cylindera*, *Ifasina*, new species, diagnosis, key, species list, Philippines, Palawan.

Zusammenfassung

Cylindera (Ifasina) kerkeringi sp.n. wird von der Insel Palawan beschrieben. Sie kann von den anderen Arten der Untergattung *Ifasina* durch das Farbmuster der Flügeldecken, die Form des Flügeldecken-Apex und die Form des Aedeagus unterschieden werden.

Introduction

Twenty-two taxa of tiger beetles are currently reported from Palawan Island (WIESNER 2020), five of which are endemic (Tab. 1).

A recent identification consignment from Mr. Christian Kerkering included specimens that superficially resembled *Cylindera (Ifasina) discreta elaphroides* (DOKHTOUROFF, 1882) but on closer examination turned out to be a new species, which is described herein.

Material and methods

All measurements were taken using a stereomicroscope Motic SMZ-171. Measurements of total body length were taken from the front of the clypeus to the apex of the elytra. The label data of type specimens were collated using the following system: in order from pinhead to pin point the label data were copied with label lines. Printed white labels and rectangular shape, however, were not explicitly noted. All remaining pertinent data were recorded within brackets.

Taxonomy

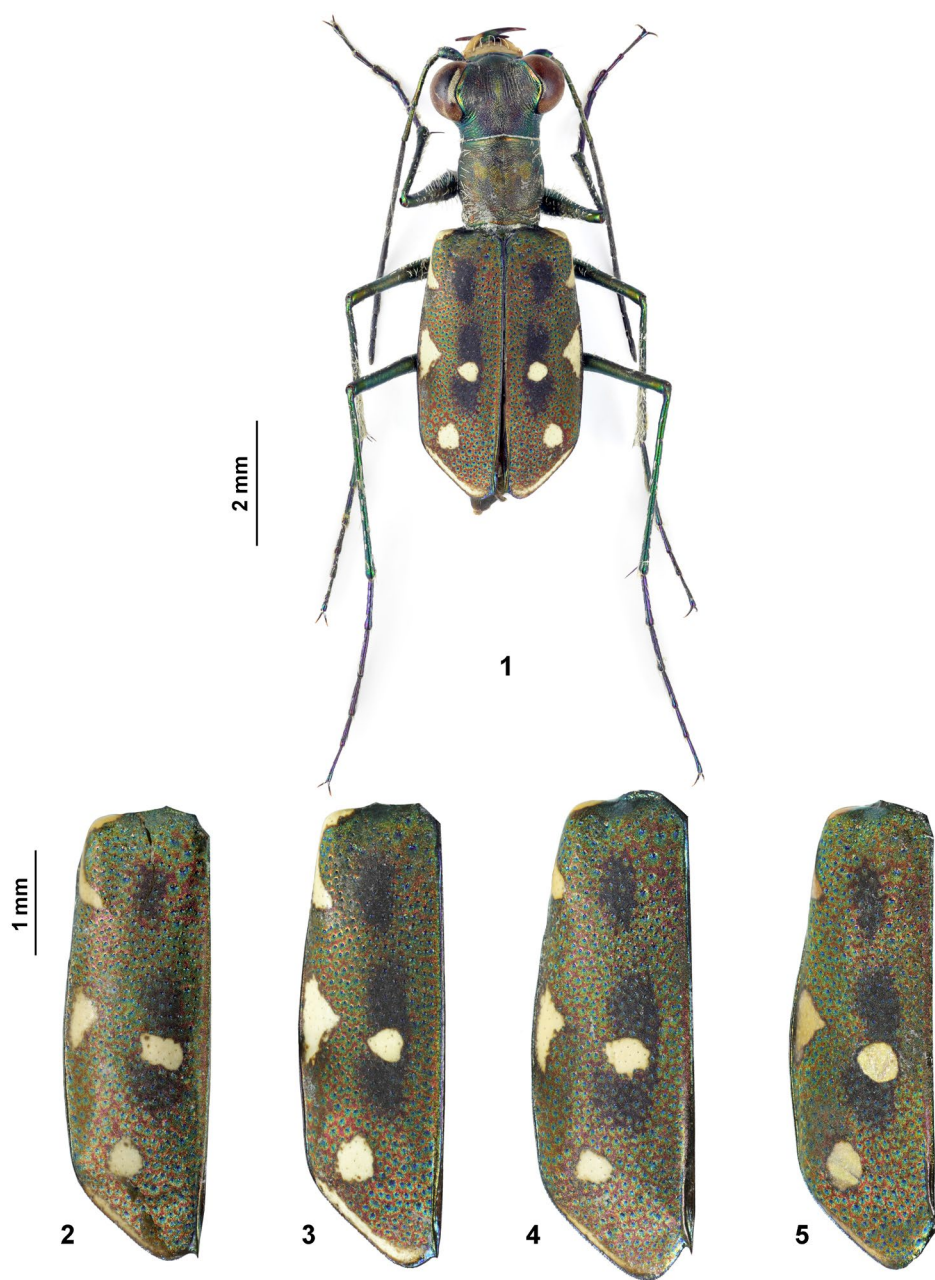
Cylindera (Ifasina) kerkeringi sp.n. (Figs 1–11)

Type depository. Holotype male and one paratype female in coll. Wiesner, one paratype male and one paratype female in coll. Kerkering, one paratype male and two paratype females in Daugavpils University Beetle Collection, Daugavpils (Ilgas), Latvia.

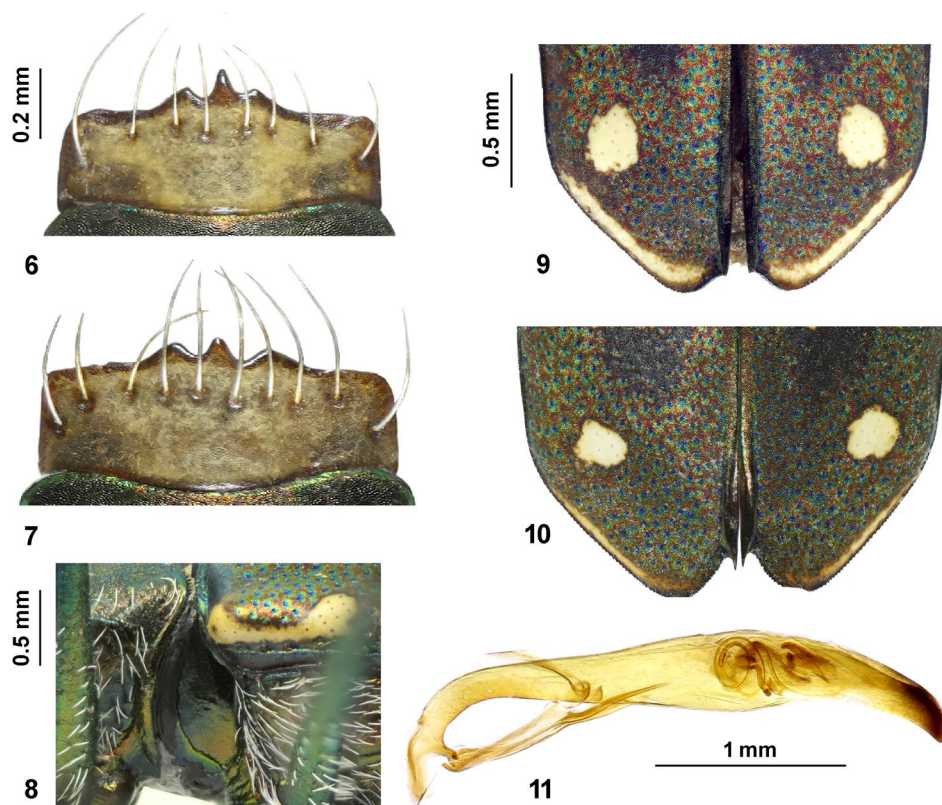
Type material. Holotype male, type labels: “Roxas village env. / Palawan Prov. - Mimaropa / Palawan – PHILIPPINES / local collector 06/2022”, “HOLOTYPE / *Cylindera* (Ifasina) / *kerkeringi* / design. Wiesner 2023” [printed, red]. Paratypes: 1 paratype female with same label data; 1 paratype male and 1 paratype female labelled “Magara village env. / Roxas municipality / Palawan - PHILIPPINES / local collector 03/2020”; 1 paratype male and 2 paratype females labelled “Roxas, Palawan, Philippines / sept. 2022”; all paratypes labelled “PARATYPE / *Cylindera* (Ifasina) / *kerkeringi* / design. Wiesner 2023” [printed, red].

Diagnosis. Labrum short, with dark brown margins. Elytra with basal lunule, middle band incomplete; with two darkened areas, one around the discal spot and another near the apical end of the humeral lunule; elytral apex restricted towards middle suture, sutural spine bent upwards in females. Aedeagus slender and curved towards apex, not tapered into a point.

Description. Size: Total length (without labrum) 6.7–7.1 mm (mean = 6.9 mm, $n = 7$). Head: Above black coppery, with minute green and coppery spots, genae likewise, clypeus red coppery; above very finely granulate, glabrous, with two setigerous punctures next to each of the eyes in front and at the centre; strong longitudinal striae on orbital plates and genae, the striae becoming less strong to extinct on vertex, and irregular, transversely waved behind eyes and at the back of neck; genae with scattered white setae. Ratio of head width to elytra width = 1.3 on average. Labrum (Figs 6, 7) yellowish with darker lateral margin, very much wider than long, ratio of width to length = 2.2 on average; with eight to ten marginal setae and three protruding apical teeth, the middle one acute-angled and longer than the obtuse-angled outer ones. Mandibles dark, with green metallic lustre, outer base yellowish. Labial and maxillary palpi yellowish, the last joint metallic greenish; basal segment of labial palpi with long erected white setae. Antennae slender, long, reaching half of the elytral length in the males, a little shorter in the females; antennomeres one to four metallic green, with coppery lustre; scape with one long apical seta, the other three antennomeres with scattered white setae; antennomeres five to eleven blackish, dull, finely and evenly pubescent. Thorax: Pronotum as wide as long (ratio of width to length = 1.0), with shallow transverse furrows; sides between transverse constrictions barely rounded; lateral margin sparsely pubescent with white setae; anterior transverse constriction shallower than posterior; black coppery, with minute green and coppery spots. Sternae, episternae and coxae coppery, coxae with white setae, scattered white setae on metepisternum, the remaining glabrous. Mesepisternum of females (Fig. 8) with a large roundish dimple in the upper half. Elytra: (Figs 2–5) longer than wide, ratio of width to length = 1.5 on average, parallel-sided, slightly widened in the middle, tapered towards the front in females; black coppery, with minute green and coppery spots, covered with large green pits throughout, with two darkened areas, one around the discal spot and another near the apical end of the humeral lunule. Elytral testaceous maculation consisting of a thin humeral lunule, a large triangulate marginal dot, a large roundish central dot, a large roundish antiapical dot, and a thin apical line. Apical microserration fine; apical border (Figs 9, 10) distinctly rounded and restricted towards middle suture, shortly restricted in males ending in a tiny sutural spine, largely restricted in females with a long sutural spine bent upwards. Epipleura yellowish. Ventral aspect: venter setose, covered throughout with white setae, cupreous, with green lustre. Trochanters yellowish; femora, tibiae, and tarsi metallic green with cupreous lustre; legs covered with white setae. Aedeagus (total length 2.8 mm on average): on left lateral view (Fig. 11) slender, slightly thickened towards apical third, then again narrower but not tapered, curved ventrally, with blunt tip.



Figs 1–5. *Cylindera (Ifasina) kerkeringi* sp.n.: (1) Habitus of holotype, male. (2–5) Left elytron of (2) paratype, male; (3) holotype, male; (4) paratype, female; (5) paratype, female. © Peter Schüle.



Figs 6–11. *Cylindera (Ifasina) kerkerengi* sp.n.: (6–7) Labrum of (6) paratype male; (7) paratype female. (8) Mesepisternum of paratype female. (9–10) Elytral apex of (9) paratype male; (10) paratype female. (11) Left lateral view of aedeagus, paratype. © 6–10: Peter Schüle; 11: Alexander Anichtchenko.

Comparative notes. This new species is integrated into the identification key of Philippine *Ifasina* species given by MATA LIN (2023: 14, 15) as follows.

6. Labrum with a narrow, dark brown anterior margin. Middle band on elytron incomplete and broken into a sublateral and a discal spot; elytra of females clearly dilated in anterior third. 12
- Labrum with broad, dark brown anterior and lateral margins. Middle band on elytron complete, slightly oblique or sinuate; elytra of females only slightly dilated in anterior third. 7
- ...
12. Elytron with one darkened area around the discal spot; elytral apex not restricted towards middle suture, sutural spine not bent upwards. Aedeagus slender and gently curved and tapered towards the apex. *C. (I.) discreta elaphroides*
- Elytron with two darkened areas, one around the discal spot and another one near the apical end of humeral lunule; elytral apex restricted towards middle suture, sutural spine bent upwards in females. Aedeagus slender and curved towards apex, not tapered and ending in a point. *C. (I.) kerkerengi* sp.n.

Tab. 1: List of tiger beetle taxa reported from the island of Palawan (after WIESNER 2020). Endemic taxa are marked with an asterisk (*).

Cicindelidae LATREILLE, 1802	
Collyridini BRULLÉ, 1834	
Tricondylina NAVIAUX, 1991	<i>Tricondyla (Pseudotricondyla) planiceps</i> SCHAUM, 1862
	<i>Tricondyla (Stenotricondyla) doriai</i> GESTRO, 1874
	* <i>Tricondyla (Stenotricondyla) genieri</i> NAVIAUX, 2008
	<i>Tricondyla (Tricondyla) beccarii beccarii</i> GESTRO, 1874
Collyridina BRULLÉ, 1834	<i>Neocollyris (Heterocollyris) carbonaria</i> NAVIAUX, 1992
	<i>Neocollyris (Heterocollyris) rhodopus</i> (BATES, 1878)
	<i>Neocollyris (Neocollyris) albitarsis</i> (ERICHSON, 1834)
	<i>Neocollyris (Neocollyris) bonellii paraguensis</i> (HORN, 1894)
	<i>Neocollyris (Neocollyris) emarginata</i> (DEJEAN, 1825)
Cicindelini LATREILLE, 1802	
Theratina HORN, 1893	* <i>Therates palawanensis</i> BOGENBERGER, 1988
	<i>Therates coracinus coracinus</i> ERICHSON, 1834
Prothymina HORN, 1906	* <i>Dilatotarsa robinsoni</i> CASSOLA & MURRAY, 1979
Cicindelina LATREILLE, 1802	<i>Abroscelis tenuipes araneipes</i> (SCHAUM, 1863)
	<i>Callytron terminatum incertulum</i> (MANDL, 1964)
	<i>Callytron terminatum terminatum</i> (DEJEAN, 1825)
	<i>Calomera lacrymosa</i> (DEJEAN, 1825)
	<i>Cosmodela aurulenta</i> (FABRICIUS, 1801)
	<i>Cylindera (Ifasina) discreta elaphroides</i> (DOKHTOUROFF, 1882)
	<i>Cylindera (Ifasina) foveolata</i> (SCHAUM, 1863)
	<i>Cylindera (Ifasina) viduata</i> (FABRICIUS, 1801)
	* <i>Cylindera (Verticina) glabra</i> (BOGENBERGER, 1988)
	<i>Lophyra (Spilodia) striolata tenuiscripta</i> (FLEUTIAUX, 1893)
	<i>Lophyra (Spilodia) striolata uniens</i> (HORN, 1896)
	* <i>Thopeutica (Thopeutica) palawanensis</i> CASSOLA & WARD, 2004

Distribution. Philippines: Palawan: Roxas.

Etymology. This new species is named after the German tiger beetle collector Christian Kerkering, who provided the type specimens.

Remarks

It should be noted that *elaphroides* DOKHTOUROFF, 1882, presently placed within *Cylindera (Ifasina) discreta* (SCHAUM, 1863) as a subspecies, is likely more appropriately elevated to a full species rank. However, to definitively clarify this, the type specimens of both taxa must be examined. It cannot be excluded that more cryptic species are among the specimens previously determined as *C. discreta* and *elaphroides* in collections.

Acknowledgements

The author is indebted to Christian Kerkering (Emsdetten, Germany) for making the material available for study, to David L. Pearson (Tempe, Arizona) for proofreading,

Alexander Anichtchenko (Daugavpils, Latvia) for the photo of the aedeagus, and Peter Schüle (Herrenberg, Germany) for providing the remaining excellent photographs.

References

- MATALIN A.V., 2023: An annotated checklist of the species of the subgenus *Ifasina* JEANNEL, 1946, genus *Cylindera* WESTWOOD, 1831 (Coleoptera, Cicindelidae), from the Philippines, with description of a new species. – Far Eastern Entomologist 473: 1–10.
- WIESNER J., 2020: Checklist of the Tiger Beetles of the World, 2nd Edition. – Winterwork, Borsdorf, 540 pp.

Author's address: Jürgen WIESNER,
Dresdener Ring 11,
D-38444 Wolfsburg, Germany
E-mail: juergen.wiesner@wolfsburg.de

ZOBODAT - www.zobodat.at

Zoologisch-Botanische Datenbank/Zoological-Botanical Database

Digitale Literatur/Digital Literature

Zeitschrift/Journal: [Zeitschrift der Arbeitsgemeinschaft Österreichischer Entomologen](#)

Jahr/Year: 2023

Band/Volume: [75](#)

Autor(en)/Author(s): Wiesner Jürgen

Artikel/Article: [A new tiger beetle species \(Coleoptera: Cicindelidae\) from Palawan Island, Philippines 25-30](#)