

Zoologischer Anzeiger

herausgegeben

von Prof. **J. Victor Carus** in Leipzig.

Zugleich

Organ der Deutschen Zoologischen Gesellschaft.

Verlag von Wilhelm Engelmann in Leipzig.

XVIII. Jahrg.

30. December 1895.

No. 492.

Inhalt: **I. Wissenschaftliche Mittheilungen.** 1. Ohlin, Additional notes to my paper: »Bidrag till kändedom om malakostrakfannan i Baffin Bay och Smith Sound«. 2. Nassouow, Über das Operculum der Embryonen des *Struthio camelus* L. 3. Kuanthe, Einige Notizen über *Bliccopsis erythrophthalmoides* Jäck. 4. Garbowski, Ein Fall sternosacraler Scoliose bei Tetrao. 5. Barthels, Notiz über die Excretion der Holothuriern. 6. du Plessis, Note sur l'importation des Némertiens dans les eaux douces. **II. Mittheil. aus Museen, Instituten etc.** 1. Zoological Society of London. 2. Linnean Society of New South Wales. 3. Зоологическое Отделение Императорскаго Общества Любителей Естественнаго, Антропологич. и Этнографич. Berichtigung. **Litteratur.** p. 457—476.

I. Wissenschaftliche Mittheilungen.

1. Additional notes to my paper: »Bidrag till kändedom om malakostrakfaunan i Baffin Bay och Smith Sound«.

By Axel Ohlin, Lund¹.

eingeg. 28. September 1895.

On account of my stopping away from Lund and thus in want of the library of the university of that city, while writing the paper above cited and published in kongl. Fysiografiska Sällskapet's i Lund Handlingar for this year, I had no opportunity of consulting some works recently published about arctic Malacostraca.

Besides Edward J. Miers': »On a small Collection of Crustacea made by Edward Whymper, Esq., chiefly in the N. Greenland Seas; with an Appendix on additional Species collected by the late British Arctic Expedition« in Journ. Linn. Society. Zool. Vol. 15. 1881. p. 59, in which the author enumerates but a small number of Crustaceans collected at Hare Island some miles north from Godhavn and every one already known from Greenland, the paper thus on the whole being of no importance for my matter, I did not know the existence of a catalogue of animals collected on the Murman Coast by Captain Horn viz.: »Die Fauna der Insel Jeretik, Port Wladimir, an der Murman-Küste. Nach den Sammlungen

¹ Gegenwärtig auf einer Reise nach dem Feuerlande begriffen.

des Herrn Capitän Horn. I. Theil. Die Reptilien, Amphibien, Fische, Mollusken, Brachiopoden, Krebse, Pantopoden und Echinodermen« by Georg Pfeffer in Jahrb. d. Hamburger Wissensch. Anst. Jahrg. 7. 1889. p. 83. By this work the geographical distribution of some Crustaceans mentioned by me must be extended to the Murman coast. As not before observed along that coast Pfeffer enumerates *Eupagurus pubescens*, *Sclerocrangon boreas*, *Hippolyte Gaimardii*, *H. spinus*, *H. turgida*, *Phryxus abdominalis* and *Caprella septentrionalis*.

The collection of marine invertebrated animals made in Cumberland Sound by the German Expedition 1882—1883 was worked up by G. Pfeffer and the result published in a paper cited by me l. c. in the introduction p. VI footnote. Now I find it was a very poor one, at least, on Crustaceans. The collection did not contain more than the following species: *Hippolyte aculeata*, *H. Amazo* n. sp., *Gammarus* cf. *fluviatilis* Roesel and *Caprella linearis*. The last species I supposed to be observed the first time by me on the coast of America, viz., in the harbour of St. Johns, New Foundland, which is, thus, proved an error.

It is very much to regret that I had no opportunity, before printing my paper, to look into an important work on Crustaceans from Spitzbergen by Julius Vosseler. It appeared in Willy Kükenthal's »Beiträge zur Fauna Spitzbergens. Amphipoden und Isopoden von Spitzbergen« in Arch. für Naturgesch. 55. Jhg. 1. Bd. 1889. p. 151. The list contains 25 Amphipods and 2 Isopods, five of which are new for the fauna of Spitzbergen and five for the science. Among the former, the author mentions *Ampelisca propinqua* Boeck, which species as well as *Ampelisca macrocephala* Lilljeborg I consider only as a variety or a younger stage of Kröyer's *A. Eschrichtii* observed before on Spitzbergen.

Among the new species established by Vosseler I find an *Anonyx* of which I am not quite sure if it must be regarded as identical with the form described by me as *Anonyx affinis* (l. c. p. 24). I see some slight differences between my species and Vosseler's *Anonyx Kükenthali*. The main deviation which my form shows from this is the different shape of the inferior posterior corner of the third metasom-segment. In my specimens this is but little curved up in a very small point. *Anonyx Kükenthali* as figured by Vosseler in tab. 8 fig. 1 has this process much more distinct and relatively greater. After a careful examination of the four individuals at my disposal of *Anonyx affinis* and after a comparison of these with the short description given by Vosseler of his *Anonyx Kükenthali* I find some other differences chiefly in the structure of the accessory flagellum and in the re-

relative length of the propodal and carpal joints of the second pair of gnathopods. Yet I feel a little uncertain whether it may be considered as characteristics of specific value. and I have thought it proper to direct, in this way, the attention of carcinologist working up further collections of *Malacostraca* from the Arctic seas on these two forms to prove if they are both »good« species or if my *Anonyx affinis* must be regarded only as a variety of *Anonyx Kükenthalii* Vosseler.

Lund, Sweden, Sept. 10th 1895.

2. Über das Operculum der Embryonen des *Struthio camelus* L.

Vorläufige Mittheilung.

Von N. Nassonow, Prof. der Zoologie der Universität Warschau.

eingeg. 1. October 1895.

Bei Straußenembryonen von acht Tagen der Bebrütung sind ganz deutlich die vier Paare von Kiemenspalten, von welchen nur die drei ersten Paare ganz offen sind, zu sehen. Am meisten entwickelt erscheint das erste Paar Kiemenspalten, welches weit nach der Dorsal-seite zu liegt. Der hinter ihm liegende Visceralbogen (Hyoidbogen) unterscheidet sich von den anderen durch etwas größere Breite (Fig. 1 a_1)

Fig. 1.

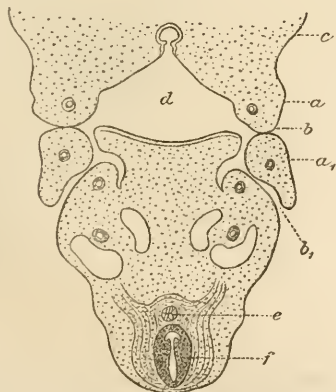


Fig. 2.

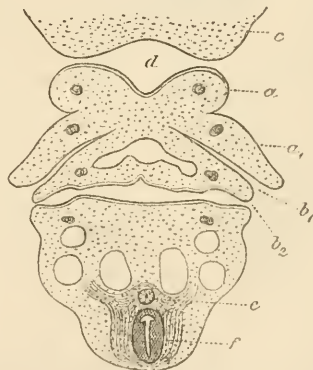


Fig. 1 und 2. Zwei Querschnitte durch die Kiemenspaltenregion des Straußenembryos von acht Tagen. *a* erster Visceralbogen; a_1 zweiter Visceralbogen (Hyoidbogen); *b* erste Kiemenspalte; b_1 zweite Kiemenspalte; b_2 dritte Kiemenspalte; *c* Kopf; *d* Mundhöhle; *e* Chorda dorsalis; *f* Rückenmark.

und vor Allem durch eine Hautfalte, welche von seinem Hinterrande über die zweite Kiemenspalte (Fig. 1 b_1) hinunterhängt. Indem diese Hautfalte auf die Ventralseite übergeht (Fig. 2 a_1), verdeckt sie vollkommen die zweite und theilweise die dritte Kiemenspalte (Fig. 2 b_1 und b_2) und erscheint als rudimentäres Operculum.

ZOBODAT - www.zobodat.at

Zoologisch-Botanische Datenbank/Zoological-Botanical Database

Digitale Literatur/Digital Literature

Zeitschrift/Journal: [Zoologischer Anzeiger](#)

Jahr/Year: 1895

Band/Volume: [18](#)

Autor(en)/Author(s): Ohlin Axel

Artikel/Article: [1. Additional notes to my paper: "Bidrag till kännedomen om malakostrakfaunan i Baffin Bay och Smith Sound" 485-487](#)