

The rediscovery of Perret's toad, *Amietophrynus perreti* (Schlötz, 1963) after more than 40 years, with comments on the species' phylogenetic placement and conservation status

Abiodun B. Onadeko¹, Mark-Oliver Rödel², H. Christoph Liedtke³ and Michael F. Barej³

¹ Department of Zoology, Faculty of Sciences, University of Lagos, Akoka, Yaba, Lagos, Nigeria

² Museum für Naturkunde, Leibniz Institute for Evolution and Biodiversity Science, Invalidenstrasse 43, 10115 Berlin, Germany

³ Department of Environmental Science (Biogeography), University of Basel, Klingelbergstrasse 27, 4056 Basel, Switzerland

<http://zoobank.org/1E6DF705-A761-4F24-8AE8-D16B702CC852>

Corresponding author: Mark-Oliver Rödel (mo.roedel@mf-n-berlin.de)

Abstract

Received 9 July 2014
Accepted 19 Aug 2014
Published 1 October 2014

Academic editor:
Peter Bartsch

Key Words

Amphibia
Anura
Bufonidae
conservation
ecology
inselberg
morphology
Nigeria
phylogeny
systematics
West Africa

Perret's toad, *Amietophrynus perreti*, has not been seen since 1970 and thus believed to be lost. We searched for the species 50 years after its original description and successfully recorded its continued presence at the type locality, where it seems to maintain a viable population. We failed however, to record the species at suitable sites elsewhere and *A. perreti* could thus indeed be a micro-endemic species, specialized and restricted to the granite inselbergs of the Idanre Hills, Nigeria. We recorded and discuss potential threats and suggest keeping the toad's current conservation status as 'Vulnerable'. We investigated the systematic status of Perret's toad using a mitochondrial fragment of the 16S rRNA gene and could confirm that it is a member of the genus *Amietophrynus* despite its aberrant larval biology, different to the rest of the genus. In spite of this biological difference, *A. perreti* is not a phylogenetically isolated lineage, but is nested within a clade of western African *Amietophrynus* species, such as *A. maculatus*, *A. regularis*, *A. latifrons* and *A. togoensis* and is sister to the widespread and savannah dwelling *A. maculatus*.

Introduction

In 1963 Arne Schlötz described a new toad from inselbergs, isolated old granite outcrops, in the Idanre Hills "near Idanre Resthouse, Ondo Province", south-western Nigeria (Schlötz 1963). This new species, *Bufo perreti*, dedicated to the Swiss herpetologist Jean-Luc Perret, is morphologically similar to the common African toad species *Amietophrynus maculatus* (Hallowell,

1854) and *A. regularis* (Reuss, 1833). However, among various morphological details the new species differed by a fundamentally aberrant breeding biology. Whereas all other known *Amietophrynus* species deposit strings with numerous small eggs in water (Liedtke et al. 2014), from which exotrophic and aquatic tadpoles with very similar morphologies are hatching (compare Channing et al. 2012), *A. perreti* has semi-terrestrial egg deposition (Tandy and Keith 1972) and very slender shaped, semi-

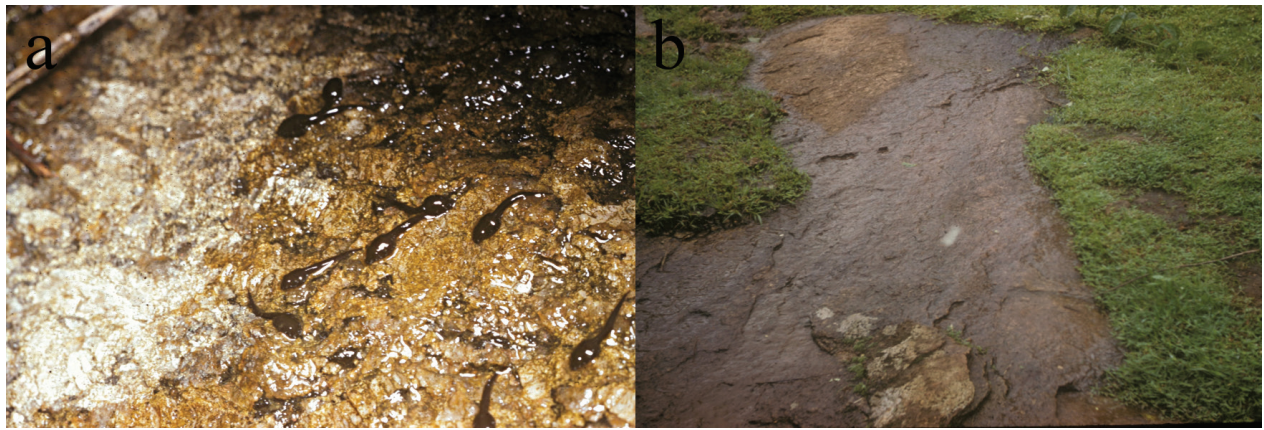


Figure 1. Habitat (right) of *Amietophrynus perreti* tadpoles (left) at the type locality, the Idanre Hills in Nigeria (photos: courtesy of A. Schjötz).

terrestrial tadpoles, developing in shallow water-films on wet, sometimes vertical rocks (Schjötz 1963; Fig. 1).

Since its description the species has rarely been mentioned in the literature. Based on osteological characters (Martin 1972) and acoustic criteria (Tandy and Keith 1972) it was placed in a monotypic group within the genus *Bufo*. Mills Tandy studied the three toads *A. perreti*, *A. maculatus* and *A. regularis* in 1964 and 1965, occurring in sympatry at the *A. perreti* type locality, and observed that they differ in size, advertisement call parameters, reproductive season and biology, as well as in microhabitat selection (Tandy and Keith 1972). Based on karyology ($2n=20$; Bogart 1968), but without genetic data, Frost et al. (2006) transferred *B. perreti* into their new genus *Amietophrynus*, and Channing et al. (2012) redescribed the tadpoles. Schjötz and Tandy (2004) and Stuart et al. (2008) give the conservation status of the species as 'Vulnerable'.

However, only Mills Tandy seems to have collected new data from the field (Tandy and Keith 1972) and until now, the species is still only known from its type locality. On the webpage of the Amphibian Survival Alliance (ASA 2014) *Amietophrynus perreti* is listed as being lost, the last observation dating to 1970. We do not know from which data the later date stems. In 2013, 50 years after its original description, we decided to search for the species. Our aims were fourfold: i) document if the species still exists at the type locality, ii) collect data on the population status, iii) search in neighbouring areas for further populations, and iv) investigate the systematic position of this species.

Material and methods

All field work was carried out by two persons (ABO and a field assistant) in the Idanre Hills, Ondo Province, south-western Nigeria (approximately $7^{\circ}06'N$, $5^{\circ}06'E$; see Appendix). The region was visited three times; the first visit from 10–12 October 2013 was only used to get familiar with the topography and to select a suitable field assistant. The second visit took place at the beginning of

the dry season (26–28 October 2013). During three days and two nights we applied visual and acoustic encounter surveys (compare Rödel and Ernst 2004) at three sites (see below). Day surveys were conducted at all sites while night surveys were conducted at sites A and C only. The third visit comprised one day and one night survey at sites A and B, respectively, and took place from 13–14 March 2014, the ending of the dry season (Table 1).

Site A ($7^{\circ}06'37.3"N$, $5^{\circ}06'24.1"E$) comprised approximately 2 ha situated between two huge rocks, only about 50 m from the town of Idanre (Fig. 2a, c). Water flowed in two valleys between these rocks. The vegetation consisted mainly of shrubs and small trees. Site B ($7^{\circ}06'14.2"N$, $5^{\circ}04'41.3"E$), covering about 1.5 ha, was approximately 250 m height on the rocks. This area was relatively flat with patches of vegetation, shrubs and trees, growing on the rocks. Water was flowing down from higher locations, forming rock-pools in some depressions (Fig. 2b). Site C ($7^{\circ}06'32.9"N$, $5^{\circ}04'28.0"E$) was part of a cocoa farm adjacent to a large inselberg, including a creek flowing through the farm (Fig. 2e). The creek had a rocky bottom and was 6–11 cm deep. Along the water course, there were few grasses and shrubs.

In addition, we surveyed two further sites with similar habitats (rocky inselbergs). Ikere was about 28 km from Idanre. Two areas were surveyed here on 3–4 November 2013 and 16 March 2014. Site 1 comprised giant rocks and was surveyed for 6 and 4 hours per day and night, respectively (3 day and 2 night surveys, each 2 hours length). With the same sampling effort we investigated site 2, a cocoa plantation near rocks. The second area was situated about 6 km from Akure and was searched on 6 November 2013 for 3.5 hours during the day and night, respectively. A map of all surveyed sites is provided in Figure 3.

All amphibians encountered were recorded. A few vouchers were collected to ascertain species determination. They were euthanized in a chlorobutanol solution and preserved in 75% ethanol. Vouchers are deposited at the zoological collection of A.B. Onadeko at the University of Lagos (no accession numbers) and at the Museum für Naturkunde Berlin (see Appendix for ZMB and GenBank



Figure 2. The Idanre Hills inselbergs in south-western Nigeria (a-f), the type locality and only known habitat of *Amietophrynus perreti*. Survey site A was only about 50 m from the last house in a; b: figures a overflow part of rock at site B; c: some *A. perreti* were observed close to the waste dumping site (left at the rock base), probably feeding on flies or other insects; d: a road leading to Site C, the cocoa farm being further in the background adjacent to the large rock; e: part of site C.

Table 1. Time period and time span spent searching for *Amietophrynus perreti* per site in the Idanre Hills. In parenthesis total search time per site is given in person-hours.

Date	26-28 October 2013		13 March 2014	14 March 2014
Site / time	Day	night	day	night
A (17 p-h)	14:00-16:00	21:00-23:00	15:00-17:30	21:00-23:00
B (16 p-h)	08:00-10:00	–	08:00-11:00	18:00-21:00
C (6 p-h)	11:00-13:00	19:00-20:00	–	–

accession numbers). Muscle samples of some toads were investigated to test for their systematic placement. Unfortunately only two samples could be genotyped, probably

due to impure ethanol used for tissue storage. For the molecular procedures applied compare Rödel et al. (2012). Sequences, ca. 575 base pairs of the mitochondrial 16S gene,

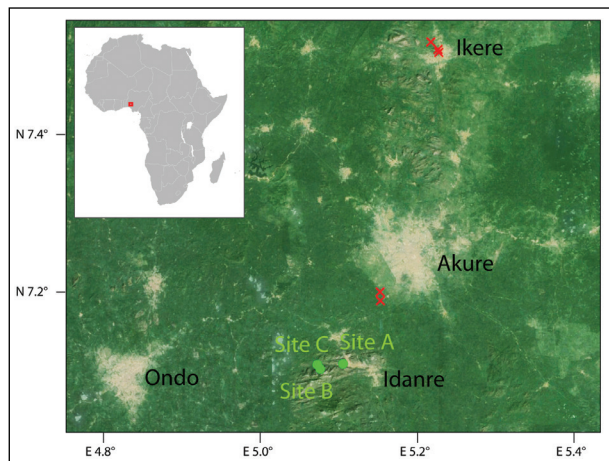


Figure 3. Sites around Idanre Hills surveyed for *Amietophrynus perreti*; green circles: toads recorded, red crosses: toads not found.

were compared to GenBank data as well as sequences for additional *Amietophrynus* species of interest (see results). Sequences were aligned using MAFFT v7.017 (Katoh and Standley 2013) and a Bayesian phylogenetic inference was carried out using MrBayes version 3.2.2 (Ronquist et al. 2012). Four independent runs were executed to assess convergence, each for 3 million generations, sampling every 1000 generations. Four chains per run were allowed to sample across the entire general time reversible substitution model space and the first 10% of each run were discarded as burn-in before generating a 50% majority-rule consensus tree from the posterior tree samples. Uncorrected 16S p-distances of *A. perreti* and included *Amietophrynus* spp. were calculated using PAUP* 4b10 (Swofford 2003).

Results

Occurrence, abundance and threats. We rediscovered *Amietophrynus perreti* and observed them in sympatry with *A. regularis*, *Phrynobatrachus* spp. and *Arthroleptis* spp. at the study sites of the Idanre Hills inselbergs. We did not observe any *A. maculatus*, known to occur here as well (Tandy and Keith 1972). Occasionally we spotted *A. regularis* in close vicinity to *A. perreti*, but then usually at the rock bases. *A. regularis* were particularly dominant around the town of Idanre, where *A. perreti* was lacking. Puddle frogs, *Phrynobatrachus*, were observed on the rocks, in vegetation around water-filled rock-pools. *Arthroleptis* were abundant in the cocoa farm and in tertiary vegetation but absent from the rocks. In total we observed 111 *A. regularis*, 49 *Phrynobatrachus* spp. and 98 *Arthroleptis* spp. during 39 person-hours of searching.

Amietophrynus perreti (Fig. 4) were observed during day and night, mainly on higher parts of the rocks. They were encountered on the hard rock surfaces and among low herbal vegetation on sandy soil between the rocks. During October 2013 we observed a total of 31 *A. perreti*, 16 during the day (12 person-hours search time, Table 1) and 15 during the night (6 p-h). In March 2014 we



Figure 4. A specimen of the rediscovered *Amietophrynus perreti* from the type locality, the Idanre Hills, south-western Nigeria.

recorded a total of 12 *A. perreti*, 5 during day (11 p-h) and 7 (10 p-h) during night time (Table 2). Compared to the other anuran taxa, *A. perreti* had the lowest abundances.

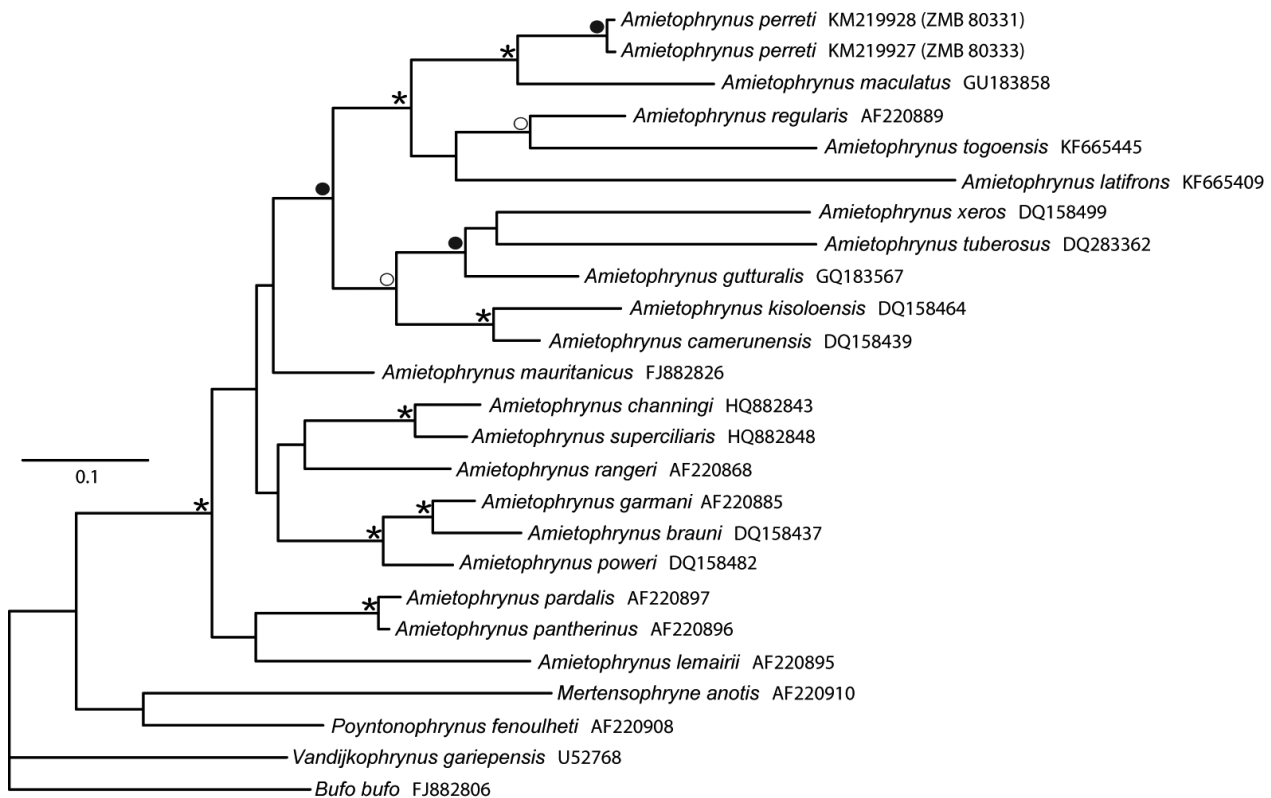
We observed two potential threats to the survival of the toads. Most importantly some areas around the sites are being cleared for cocoa plantations, the major cash crop in the region. At higher places on the rocks some crops such as pepper, corn and banana are planted. Another cash making venture is the intense cutting of trees that grow among the rocks.

We could not observe *A. perreti* in two other localities, namely Akure, 6 km and Ikere, about 28 km from Idanre. Both had similar habitats and topography compared to the *A. perreti* type locality.

Morphology. We examined three male and four female *A. perreti* vouchers (see Appendix). The males' snout-vent-lengths (SVL: 39.4–40.2 mm) were within the range Schjötz (1963) and Tandy and Keith (1972) provided for their specimens. None of the presumed male toads exhibited nuptial pads (dry season and hence no reproductive season). The females (55.3–64.4 mm SVL) slightly exceeded the sizes of the known females (Schjötz 1963, Tandy and Keith 1972). Small differences to the original description concern the size of the metatarsal tubercles, being quite big and clearly distinct (larger in females than in males), and the presence of small, very flat and indistinct warts on the top of the head (no warts according to original description). All toads had comparatively flat heads, slightly pointed in lateral view (rounded in *A. regularis* and *A. maculatus*), almost no webbing between toes (distinct webbing between toes in *A. regularis* and *A. maculatus*), no tarsal fold (present in *A. regularis* and *A. maculatus*), and a white throat in males (dark in *A. regularis* and *A. maculatus*). In the preserved vouchers (some of them very flattened after transportation) the parotid glands ranged from less distinct to slightly more pronounced than in *A. maculatus*, but they were never as huge and smooth as in *A. regularis*. All our vouchers had more or less the same dorsal pattern as the holotype (compare Fig. 4). In life they have the olive (to yellowish) tinge Schjötz (1963) mentioned in his description. All

Table 2. Number of *Amietophrynus perreti* observed at the three study sites (compare Table 1 and site descriptions in material and methods section).

Date	26–28 October 2013		13 March 2014	14 March 2014	Total
Site / time	day	night	day	night	
A (17 p-h)	9	11	3	5	28
B (16 p-h)	5	0	2	2	9
C (6 p-h)	2	4	0	0	6

**Figure 5.** Systematic placement (Bayesian phylogenetic inference based on a mitochondrial fragment of the 16S rRNA gene) of *Amietophrynus perreti* within the genus *Amietophrynus*. Bayesian PP values are as follows: asterisks (“*”) point to maximum support (1.00), full circles (“●”) point to PP 0.95–0.99; empty circle (“○”) point to PP 0.90–0.94; PP values below 0.90 not shown.

preserved animals had a much clearer and more contrasting pattern than *A. regularis* and *A. maculatus*.

Generic assignment. Tandy and Keith (1972) placed *A. perreti* in its own, monotypic group, although having the same number of chromosomes as the *A. regularis-maculatus-latifrons* complex (2n= 20, Bogart 1968). A crossing of a female *A. maculatus* with a male *A. perreti* produced some embryos to the larval stage, however none of them reached metamorphosis (Blair 1972) [such crossing worked to gastrula or even larval stage even with American species nowadays placed in different genera, namely *Anaxyrus boreas*, see Blair 1972].

Our Bayesian phylogenetic inference based on 16S sequence data placed *A. perreti* as sister to *A. maculatus* (Fig. 5), with a pair-wise base difference of 7.3% (GenBank: GU183858). Pair-wise differences with other African *Amietophrynus* were: 7.86% in *A. mauritanicus* (GB: FJ882826), 9.25% in *A. channingi* (HQ882843), 9.29% in *A. regularis* (GB: AF220889), 9.60% in *A.*

gutturalis (GB: GQ183567), 9.64% in *A. camerunensis* (GB: DQ158439), 9.64% in *A. poweri* (GB: DQ158482), 9.66% in *A. superciliaris* (GB: HQ882848), 9.82% in *A. kisoensis* (GB: DQ158464), 9.87% in *A. rangeri* (GB: AF220868), 10.26% in *A. pardalis* (GB: AF220897), 10.43% in *A. pantherinus* (GB: AF220896), 10.47% in *A. garmani* (GB: AF220885), 11.19% in *A. brauni* (GB: DQ158437), 11.23% in *A. lemairii* (GB: AF220895), 11.66% in *A. latifrons* (GB: KF665409), 12.15% in *A. xeros* (GB: DQ158499), 12.29% in *A. tuberosus* (GB: DQ283362), and 12.42% in *A. togoensis* (GB: KF665445). There were no base pair differences between the two sequenced *A. perreti* specimens.

Discussion

We succeeded in rediscovering *Amietophrynus perreti* at its type locality, 50 years after its original

description, and 43 years after the last observation, if the date of 1970 is correct (ASA 2014). A welcome by-product of our investigations was that we could confirm the morphological description of the species by Schjötz (1963), and more importantly, confirm that it is indeed a member of the genus *Amietophrynus*. It was however, surprising, and in contrast to the osteological results of Martin (1972) and the biological and acoustical analyses of Tandy and Keith (1972), that *A. perreti* has no isolated phylogenetic position within the genus, but seems to be most closely related to the savannah dwelling *A. maculatus* (see Rödel 2000 for details of the biology of this species). The 16S sequence data did not sufficiently resolve a number of nodes in the phylogeny, however, the *Amietophrynus* crown group was well supported, as was the *A. perreti-maculatus-regularis-latifrons-togoensis* clade.

The long time gap since the previous observations and the rediscovery of the toad was not due to particular rarity of the species but can be explained by the fact that nobody else searched for the species. We found the toad being locally quite abundant, although our search time at the beginning and towards the end of the dry season certainly was suboptimal. According to Tandy and Keith (1972) *A. perreti* reproduces during the core rainy season.

Due to their age and peculiar edaphic and climatic conditions, inselbergs are very special habitats with often unique plant and animal communities (Porembski and Barthlott 2000). Unfortunately, so far they have attracted almost exclusively the attention of geologists and botanists. We only know a few studies either focusing entirely (e.g. McLachlan and Cantrell 1980, McLachlan 1981, Osborne and McLachlan 1985, Köhler and Böhme 1996, Schorr 2003) or partly on amphibians on inselbergs (Rödel 1998). As far as we know, *A. perreti* is the only African anuran species depending exclusively on this habitat type. Schjötz and Tandy (2004) speculate that *A. perreti* may occur in other areas of western Nigeria, offering similar habitats, but we did not record the species in two similar areas in closer vicinity of the type locality, nor was the species recorded by Onadeko and Rödel (2009) from other sites in south-western Nigeria. It thus seems possible that *A. perreti* is indeed an endemic species of the Idanre Hills.

During the current survey we observed no tadpoles of *A. perreti*. However, the tadpoles require a constant water film on the rocky surfaces where they graze on algae (Fig. 1), most likely in a situation like figured in Figure 2b. During the dry season, although occasional rains occur, such habitats do not exist. A reason for the absence of *A. perreti* on other inselbergs might be that the existence of this species, with its very special reproductive biology, requires an environment with high humidity persisting for prolonged periods and some water storing vegetation. Only then it seems possible that a constant water film on the rocks is maintained and provides the tadpoles of *A. perreti* with enough time to finish metamorphosis. The tadpoles seem to actively avoid deeper water and in-

stantly, when forced into water, climb out again (Schjötz 1963), showing a behavior comparable to some *Petrophryne* tadpoles (Barej et al. 2010). It thus seems that they will not make use of deeper rock-pools (Fig. 2e) and ultimately depend on the wet rock surfaces (Fig. 1).

We know from other inselbergs in the forest zone of Ivory Coast, that these provide a much hotter and drier environment compared to the surroundings and thus are home to true savannah species, even within a rain-forest matrix (Schorr 2003). The fact that true forest in south-western Nigeria disappeared almost completely (see Onadeko and Rödel 2009), may explain that *A. perreti* simply cannot survive on other nearby inselbergs because the overall climate is too hot and dry. Already Schjötz (1963) had failed to record the species in nearby inselbergs, surrounded by savannah vegetation. It is also possible that the mere dimensions of the inselberg landscape near Idanre are simply unequaled elsewhere.

According to the original description (Schjötz 1963) *A. perreti* is abundant within its habitat. Arne Schjötz collected 16 adults in July and August, 10 semi-adults and juveniles in January, July and August and 74 tadpoles in July and August 1961. On our surveys we likewise encountered the species frequently, although probably less frequent than Schjötz (1963). We guess that the toads are not only reproducing during the rainy season (Tandy and Keith 1972), but that this is also the peak activity period and that the Idanre Hills population is still in good shape. The population thus seems viable, but we do not entirely agree with the judgment of Schjötz and Tandy (2004) that the species does not face “any serious threats at present” because the “rocky habitat is largely inaccessible and useless to humans”. Schjötz (1963) reported that he found all adults at night on bare rocks. He heard males calling in July 1961 during daytime, the voices coming from “very small patches of grass and low vegetation on the rocks, never from the wooded area” (Schjötz 1963). Tandy and Keith (1972) report similar observations. It thus seems that the toads, at least during the rainy season, do not need forested areas. However, we believe that the current clearing of larger trees from the area, and the use of smaller patches to grow various crops on the rocks may result in a changing micro-climate and altered hydrology, both potentially affecting the toad's survival, especially during the dry season when humid areas are rarer. In addition, the close proximity to a human settlement and to cash crop plantations may expose the toads to agrochemicals and other potentially harmful pollutants.

As the species could not yet be recorded from any other site, the only known population deserves particular attention. Schjötz and Tandy (2004) already wrote that the species “is intrinsically at risk because of its restricted range”. We thus urge, and agree with Schjötz and Tandy (2004), for setting up a continuous monitoring program of this population and suggest aiming for a protection status for the Idanre Hills in order to assure the long-term survival of Perret's toad.

Acknowledgements

We thank the Chiefs and town elders of Idanre, as well as our field assistant Mr. Layi, allowing access to their community land. ABO also wishes to thank his wife, Mrs. F. Onadeko, who partly funded the survey costs. A. Schiøtz permitted the use of the photos in Fig. 1.

References

- ASA (2014) Search for lost frogs. <http://www.amphibians.org/lostfrogs>. [Last accessed on 1 June 2014]
- Barej MF, Rödel M-O, Gonwouo LN, Pauwels OSG, Böhme W, Schmitz A (2010) Review of the genus *Petropedetetes* Reichenow, 1874 in Central Africa with the description of three new species (Amphibia: Anura: Petropedetidae). *Zootaxa* 2340: 1–49.
- Blair WF (1972) Evidence from hybridization. In: Blair WF (Ed.) *Evolution in the genus Bufo*. University of Texas Press, Austin & London, 196–232.
- Bogart JP (1968) Chromosome number difference in the amphibian genus *Bufo*: the *Bufo regularis* species group. *Evolution* 22: 42–45. doi: 10.2307/2406648
- Channing A, Rödel M-O, Channing J (2012) Tadpoles of Africa – The biology and identification of all known tadpoles in sub-Saharan Africa. Frankfurt Contributions to Natural History, Vol. 55, Edition Chimaira, Frankfurt/M.
- Frost DR, Grant T, Faivovich J, Bain RH, Haas A, Haddad CFB, de Sá RO, Channing A, Wilkinson M, Donnellan SC, Raxworthy JC, Campbell JA, Blotto BL, Moler P, Drewes RC, Nussbaum RA, Lynch JD, Green DM, Wheeler WC (2006) The amphibian tree of life. *Bulletin of the American Museum of Natural History* 297: 1–370.
- Katoh K, Standley DM (2013) MAFFT multiple sequence alignment software version 7: improvements in performance and usability. *Molecular Biology and Evolution* 30: 772–780. doi: 10.1093/molbev/mst010
- Köhler J, Böhme W (1996) Anuran amphibians from the region of pre-cambrian rock outcrops (inselbergs) in northeastern Bolivia, with a note on the gender of *Scinax* Wagler, 1830 (Hylidae). *Revue française d'aquariologie herpétologie* 23: 133–140.
- Liedtke HC, Müller H, Hafner J, Nagel P, Loader SP (2014) Interspecific patterns for egg and clutch sizes of African Bufonidae (Amphibia: Anura). *Zoologischer Anzeiger* 253: 309–315. doi: 10.1016/j.jcz.2014.02.003
- Martin RF (1972) Evidence from osteology. In: Blair WF (Ed.) *Evolution in the genus Bufo*. University of Texas Press, Austin & London, 37–70.
- McLachlan AJ (1981) Food sources and foraging tactics in tropical rain pools. *Zoological Journal of the Linnean Society* 71: 265–277. doi: 10.1111/j.1096-3642.1981.tb01133.x
- McLachlan AJ, Cantrell MA (1980) Survival strategies in tropical rain pools. *Oecologia* 47: 344–351. doi: 10.1007/BF00398528
- Onadeko AB, Rödel M-O (2009) Anuran surveys in south-western Nigeria. *Salamandra* 45: 1–14.
- Osborne PL, McLachlan AJ (1985) The effect of tadpoles on algal growth in temporary, rain-filled rock pools. *Freshwater Biology* 15: 77–87. doi: 10.1111/j.1365-2427.1985.tb00697.x
- Porembski S, Barthlott W (2000) Inselbergs – Biotic diversity of isolated rock outcrops in tropical and temperate regions. *Ecological Studies* 146, Springer, Heidelberg.
- Rödel M-O (1998) Kaulquappengesellschaften ephemerer Savannengewässer in Westafrika. Edition Chimaira, Frankfurt/M.
- Rödel M-O (2000) *Herpetofauna of West Africa, Vol. I: Amphibians of the West African savanna*. Edition Chimaira, Frankfurt/M.
- Rödel M-O, Ernst R (2004) Measuring and monitoring amphibian diversity in tropical forests. I. An evaluation of methods with recommendations for standardization. *Ecotropica* 10: 1–14.
- Rödel M-O, Onadeko AB, Barej MF, Sandberger L (2012) A new polymorphic *Phrynobatrachus* (Amphibia: Anura: Phrynobatrachidae) from western Nigeria. *Zootaxa* 3328: 55–65.
- Ronquist F, Teslenko M, van der Mark P, Ayres DL, Darling A, Höhna S, Larget B, Liu LL, Suchard MA, Huelsenbeck JP (2012) MrBayes 3.2: Efficient bayesian phylogenetic inference and model choice across a large model space. *Systematic Biology* 61: 539–542. doi: 10.1093/sysbio/sys029
- Schiøtz A (1963) The amphibians of Nigeria. *Videnskabelige Meddelelser fra Dansk Naturhistorisk Forening* 125: 1–92 + 4 plates.
- Schiøtz A, Tandy M (2004) *Amietophrynus perreti*. IUCN Red List of Threatened Species. Version 2013.2. available at: www.iucnredlist.org. [Last accessed on 1 June 2014]
- Schorr G (2003) Die Amphibiengemeinschaften auf Inselbergen im Tai-Nationalpark, Côte d'Ivoire, Westafrika. Gemeinschaftsökologische und inselbiogeographische Aspekte. Unpublished diploma thesis, Julius-Maximilians-University, Würzburg, 90 pp.
- Stuart S, Hoffman M, Chanson J, Cox N, Berridge R, Ramani P, Young B (2008) *Threatened amphibians of the World*. Lynx Editions, Barcelona.
- Swofford DL (2003) PAUP*. Phylogenetic analysis using parsimony (*and other methods). Version 4.0b10. Sinauer Associates, Sunderland, Massachusetts.
- Tandy M, Keith R (1972) *Bufo* of Africa. In: Blair WF (Ed.) *Evolution in the genus Bufo*. University of Texas Press, Austin & London, 119–170.

Appendix

Specimens investigated

Amietophrynus perreti: ZMB 80331 (female, 61.1 mm SVL), Nigeria, Ondo State, Idanre Hills, 7°6' 32.28" N, 5°6'45.3"E, 13 March 2014, GenBank#: KM219928, from a bush along a small stream flowing down the rock, leg. A.B. Onadeko; ZMB 80332 (female, 64.4 mm), 7°8'4.2" N, 5°6'2.1"E, all other data as in ZMB 80331; ZMB 80333 (cf. female, 55.3 mm), 14 March 2014, 7°6'44.64"N, 5°6'34.62"E, GenBank#: KM219927, all other data as in ZMB 80331; ZMB 80334 (female, 60.5 mm); ZMB 80335 (male 40.2 mm); ZMB 80336 (male 39.4 mm); ZMB 80337 (male, 36.6 mm); 26–28 October 2013, all other data as in ZMB 80331.

Amietophrynus regularis: ZMB 80338 (female, 65.3 mm) & ZMB 80339 (male, 64.6 mm), 26–28 October 2013, all other data as in ZMB 80331.

ZOBODAT - www.zobodat.at

Zoologisch-Botanische Datenbank/Zoological-Botanical Database

Digitale Literatur/Digital Literature

Zeitschrift/Journal: [Zoosystematics and Evolution](#)

Jahr/Year: 2014

Band/Volume: [90](#)

Autor(en)/Author(s): Onadeko Abiodun B., Rödel Mark-Oliver, Liedtke H. Christoph, Barej Michael F.

Artikel/Article: [The rediscovery of Perret's toad, *Amietophrynus perreti* \(Schizotz, 1963\) after more than 40 years, with comments on the species' phylogenetic placement and conservation status 113-119](#)